

# eDiscovery Services

Complexity requires expert advisors.

- Services to help you stay on time and on budget
- The industry's only AI-powered portable and predictive risk management solution
- Ranked #1 in Early Case Assessment in a global management consulting firm research report (Nov. 2017)

## By the Numbers

### 3,000+

Employees Worldwide

### 100K+

Matters Completed to Date

### 8,000+

Matters Currently Hosted Globally

### 31+

Languages covered in Review Projects Globally

### 70+

Offices, Data Centers & Review Facilities around the world

### 3,000+

Seats of Review Capacity

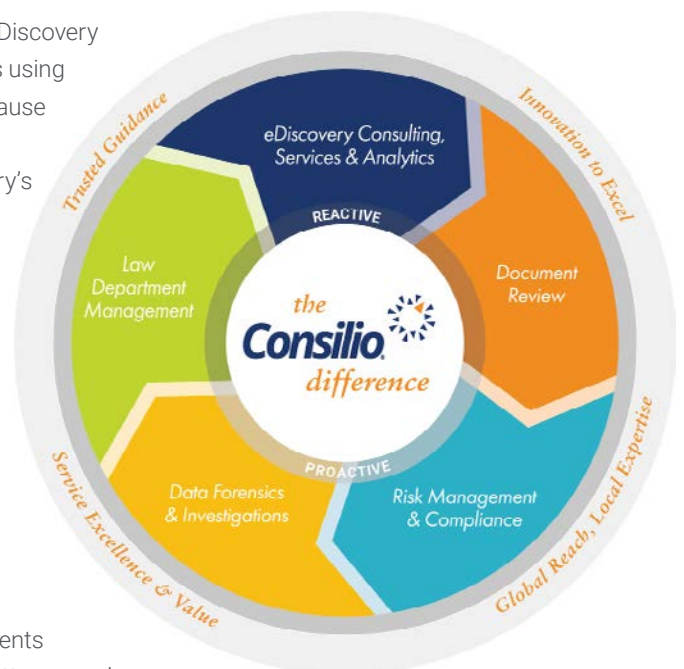
With high-volume, high-speed, and high-stakes matters, our clients require seasoned guides, expert in technology-enabled solutions to help them make smart decisions quickly and efficiently. That means a highly consultative approach to find what matters, when it matters on time and within budget.

## We Are Guides, Not Order Takers

Law firm and corporate clients are increasingly engaging our specialized experts to extend and expand their discovery and litigation management teams. Our expert advisors assist in developing protocols, conducting technical custodian interviews, identifying data sources and creating matter-specific data maps, participating in meet and confers, and appearing in court when necessary.

## All the Ingredients for Successful Outcomes

- Master of tools.** Even the world's best eDiscovery tools are only as effective as the experts using them. We know the enhanced tools because we've built them, including four patents granted or pending, including the industry's only AI-powered portable and predictive risk management solution: Riskcovery®
- Quality Control.** Through every step of the project, we help validate your workflow and recommend best practices based on our experience. Our proven processes and patent-pending QC oversight mean faster turnaround without sacrificing quality.
- Industry and Matter Expertise.** Our in-depth knowledge of the types of documents generated in different Industries and matters—and how they are typically used and stored—saves you significant time and expense in the discovery process. We received the industry's #1 ranking in Early Case Assessment in a global management consulting firm's research report (November 2017).

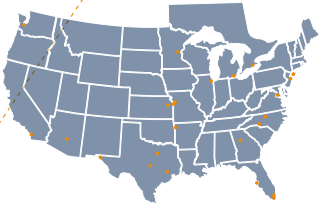


Global Leader in Legal Consulting and Services

consilio.com

Where we are:

North America



Europe



Asia Pacific (APAC)



Offices

20+ in North America

6+ in Europe

5+ in Asia Pacific



Document Review

12+ in North America

4+ in Europe

4+ in Asia Pacific



Data Centers

3+ in North America

4+ in Europe

4+ in Asia Pacific

- **ESI Protocol Review.** Drafting the ESI Protocol is an early and critical stage of discovery management. Foreseeing challenges and potential pitfalls are what our experts do best - working with your knowledge leaders and counsel, we'll help you draft a protocol that is appropriate for the matter, meets industry standards, and proactively addresses likely areas of risk.
- **Meet and Confers.** Our team is available to support Counsel during meet and confers with opposing counsel, and speak to the methods, protocols, and practices that were employed throughout the discovery lifecycle. This may help avoid unnecessary motions and disputes due to misunderstandings.
- **Court Appearances.** As needed, our consultants provide expert witness testimony, presenting details.

CASE STUDY:

*Advisor to a Large Oil and Gas Corporation*

A large oil and gas corporation engaged our company for Early Case Assessment on a matter involving a substantial number of documents. Opposing counsel suggested keyword lists that were unnecessarily inclusive and provided numerous false positives—as well as potential added complexity and expense.

Our expert advisors challenged the status quo by developing customized search and custodian collection strategies, providing fact-based insight for negotiations with opposing counsel.

The result was that our client prevailed in limiting collection requirements and keyword terms, reducing document review by 25 percent.

Ready to Learn More?

Visit [consilio.com](http://consilio.com) or email [info@consilio.com](mailto:info@consilio.com)